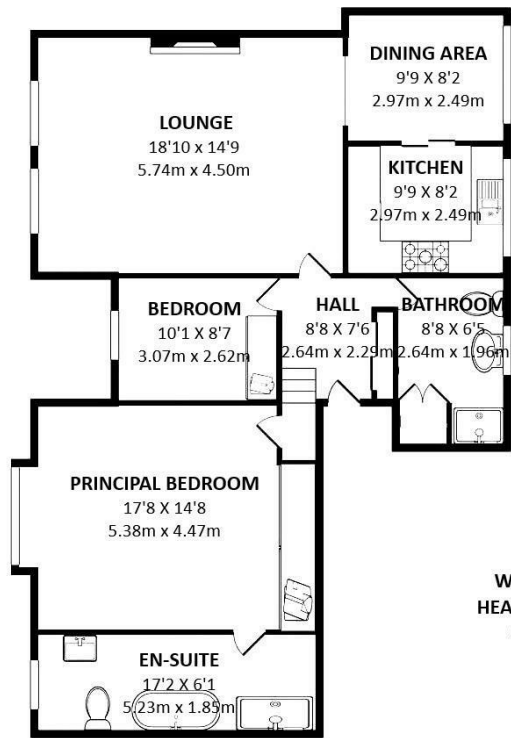


Flat 16 Westleigh, 36 Clifton Road, Heaton Moor, Stockport, SK4

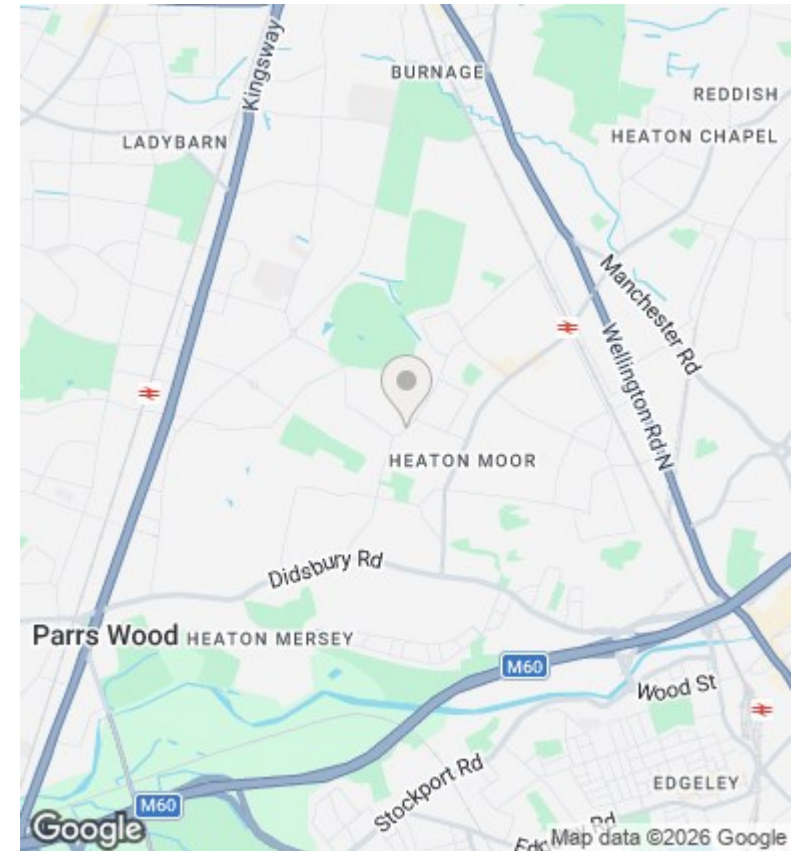
Guide Price £400,000

- Incredibly Well Proportioned
- Finished to a High Standard
- Exciting and Rare Opportunity
- Excellent Location Close to Heaton Moor Village
- Private Garage and Off-Road Parking
- No Vendor Chain
- Two Receptions and Two Bathrooms
- Beautifully Maintained Gardens



WESTLEIGH,
HEATON MOOR,
SK4 4BU

Whilst every attempt has been made to ensure the accuracy of the floorplan contained here, measurements of doors, windows, rooms and any other items are approximate and no responsibility is taken for any error, omission or mis-statement. This plan is for illustrative purposes only and should be used as such by any prospective purchaser. The services, systems and appliances shown have not been tested and no guarantee as to their operability or efficiency can be given.
Made with Metrepro ©2026



Directions

Viewings

Viewings by arrangement only. Call 0161 432 0432 to make an appointment.

Council Tax Band

D

EPC Rating:

C

Energy Efficiency Rating		Current	Potential
<i>Very energy efficient - lower running costs</i>			
(92 plus) A			
(81-91) B			
(69-80) C		72	75
(55-68) D			
(39-54) E			
(21-38) F			
(1-20) G			
<i>Not energy efficient - higher running costs</i>			
England & Wales		EU Directive 2002/91/EC	